



Multiple Application Platform Server

MAPS 6.1 Release Guide

Product version 6.1

Last updated 9/27/2018

Trademark, Publishing Statement, and Copyright Notice

© 1998-2018 Evisions, Inc. All rights reserved.

This software and related documentation are provided under a license agreement containing restrictions on use and disclosure and are protected by intellectual property laws. No part of this document may be reproduced, stored in or introduced into a retrieval system, or transmitted in any form or by any means (electronic, mechanical, photocopying, recording, or otherwise), or for any purpose, without the express written permission of Evisions, Inc.

The information contained herein is subject to change without notice and is not warranted to be error-free. Product features referenced herein for a period of time may not match product contents. Evisions, Inc. does not warrant that the functions contained in the software will meet your requirements or that the operation of the software will be uninterrupted or error free. Evisions, Inc. reserves the right to make changes and/or improvements in the software without notice at any time.

This software and documentation may provide access to or information on content, products, and services from third parties. Evisions, Inc. and its affiliates are not responsible for and expressly disclaim all warranties of any kind with respect to third-party content, products, and services. Evisions, Inc. and its affiliates will not be responsible for any loss, costs, or damages incurred due to your access to or use of third-party content, products, or services. Evisions, Inc. does not endorse the content or developer of any products or web sites mentioned.

All information in this guide is designed for instructional purposes only. Evisions, Inc. makes no guarantees regarding the accuracy or performance of any techniques used in this guide. Software configurations and environments may vary, and some techniques used in this guide may not operate efficiently under all configurations. This guide may contain examples of various technologies or products, which are the sole property and responsibility of their creators.

Trademarks are the property of the respective owners for any products mentioned herein.

Table of Contents

- Table of Contents** **3**
- What's New in MAPS 6.1?** **4**
 - MAPS Updates 4
 - Product versions 4
 - Installation 4
 - 1. Prepare test environment and ensure current backup 4
 - 2. Check for updates 4
 - 3. Allow update process to complete 5
 - 4. Verify the latest version is installed 5
- MAPS 6.1 Release Notes** **6**
- Getting Help** **8**

What's New in MAPS 6.1?

Evisions is pleased to announce the release of MAPS version 6.1, which includes the following changes:

Enhancements

- Added an option to control storing of LDAP users' passwords when they create schedules in Argos. If this option is disabled, a system-level default user can be used to run schedules instead.
- When using HTTPS, all MAPS resources now also load over HTTPS.
- The Cloud Connector now supports paginated APIs that pass data through using multiple calls.
- The Windows client applications can now be launched using the keyboard.

Resolved Issues

- When an LDAP server was set to use nested group lookup implemented by the LDAP server, the values in the specified User Groups attribute (e.g. memberOf) were being ignored even if the LDAP server was not configured to use nesting. MAPS now unions the results of the group nesting search with those found using the specified User Groups attribute.
- When configuring authentication through CAS, MAPS was ignoring all <cas:Groups> nodes other than the last one in the list. MAPS now supports any number of groups nodes.
- Additional enhancements and resolved issues.

We appreciate the feedback received from all of our users. Our products would not be what they are today without your continued support. If you have any comments or suggestions, please do not hesitate to [open a HelpDesk ticket](#) and let us know.

MAPS Updates

MAPS 6.1 is an update to the MAPS service (which includes the eLauncher) and the MAPS Config. You should upgrade both components concurrently. Some of the changes relating to Argos also require that Argos be updated to the 6.1 level. Please refer to the [Argos 6.1 Release Guide](#) for information on updating Argos.

[Product versions](#)

The latest versions of MAPS included in this release are:

- MAPS service 6.1.0.1940 / MAPS Config 6.1.0.1049 / eLauncher 6.1.0.19

Installation

[1. Prepare test environment and ensure current backup](#)

We highly recommend installing updates in a test environment before applying them to your production environment. You should make sure that a current backup is available in case of any unforeseen issues. To create a full backup of your MAPS environment, go to the **Server** -> **Backups** screen in MAPS and click **Backup Now**.

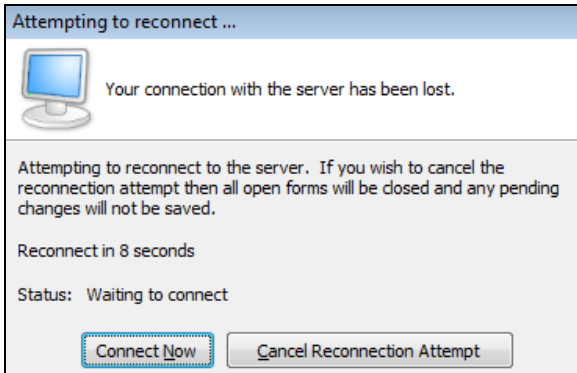
[2. Check for updates](#)

Click the **Check for Updates** button in the MAPS Configuration tool to view available updates.

It is possible to apply updates when users are on the system; however, to avoid the possibility of losing unsaved work we recommend applying updates during off hours.

[3. Allow update process to complete](#)

When applying updates to the MAPS service you will be temporarily disconnected from the server:



The update process may take a few minutes to complete. **Do NOT cancel the reconnection attempt or manually restart the server.** You will automatically be reconnected to the server once the update has been applied.

[4. Verify the latest version is installed](#)

To ensure that you are on the most current version, continue clicking the **Check for Updates** button and applying the updates until no new updates are available.

Please Provide Us with Your Feedback!

As always, we welcome any [feedback or suggestions](#) you may have. We very much appreciate your thoughts and suggestions, so please keep the great ideas coming!

MAPS 6.1 Release Notes

MAPS Service 6.1.0.1940 / MAPS Config 6.1.0.1049 / eLauncher 6.1.0.19

MAPS

Enhancements

Area	Description	Issue Number
Accessibility	The Windows client applications (Argos, FormFusion, IntelCheck, and MAPS Config) can now be launched when using the keyboard to navigate the eLauncher.	MAPS-693
Accessibility	The Help buttons that appear on various dialogs throughout the eLauncher were reading as "english/default" to screen reader users.	MAPS-704
Cloud Connector	The Cloud Connector now supports paginated APIs that pass data through using multiple calls.	MAPS-1884
Data Dictionary	On the Data Dictionary screen, dictionary entries now have an explicit default sort order. You can still change the sort by clicking on the column headers.	MAPS-1898
Documentation	Updated the minimum system requirements to specify that users running Internet Explorer browsers must be on at least version 11.	MAPS-1804
LDAP	When an LDAP server was set to use nested group lookup implemented by the LDAP server, the values in the specified User Groups attribute (e.g. memberOf) were being ignored even if the LDAP server was not configured to use nesting. MAPS now unions the results of the group nesting search with those found using the specified User Groups attribute.	MAPS-1786
Scheduling	Added an option to the Users -> Password Policy screen that controls storing of LDAP users' passwords when they create schedules in Argos. If this option is unchecked, you will need to set a MAPS user as the system-level default user for schedules so that schedules created by LDAP users can continue running.	MAPS-1793
Security	When using HTTPS, all MAPS resources now also load over HTTPS. This change resolves security scan warnings pertaining to passive mixed content vulnerability. Note that in order to avoid reintroducing mixed content, customized resources such as the eLauncher logo will also need to use HTTPS.	MAPS-1775

Resolved Issues

Area	Description	Issue Number
Accessibility	Removed the user-scalable=no and maximum-scale=1.0 attributes that told browsers to disallow resizing of the eLauncher. This issue resulted in a technical accessibility violation; however, all supported browsers allowed users to zoom in regardless of these settings.	MAPS-1413
CAS	When configuring authentication through CAS, MAPS was ignoring all <cas:Groups> nodes other than the last one in the list. MAPS now supports any number of groups nodes.	MAPS-1791
Diagnostics	When MAPS was installed on a Windows 10 machine, the boot date/time on the Diagnostics screen was showing as "NET STATISTICS".	MAPS-1918
Groups	When checking permissions for specific objects in Argos, MAPS was unable to determine whether a CAS user had the necessary permissions based on their LDAP group membership.	MAPS-1840
Inspector	In the Inspector, attempting to refresh an individual connected client resulted in missing information for that client.	MAPS-1796

Area	Description	Issue Number
Installation	After installing MAPS from the 6.0.0 setup.exe, the default IP range for the Universal Launcher was not configured automatically as it should have been. MAPS will now create this range automatically if one is not present.	MAPS-1799

Getting Help

For information on using the software, please refer to the in-product Help, which contains detailed information on all aspects of the product.

If you are having problems with the installation or configuration, you can search our knowledge base of common issues and their resolutions at <http://helpdesk.evisions.com>. If you are unable to find the solution, submit a HelpDesk request with a detailed explanation of the problem you are experiencing.

Please do not hesitate to contact the Evisions HelpDesk if any questions or problems arise. We are here to help you and want to ensure your success.

If you find that areas of this documentation could benefit from additional detail or clarification, please let us know. We are constantly trying to improve the installation process to make it as easy as possible.